

1MCo5

Projectwise Installation and Configuration Guide

Document no.: 1MCo5-ALJ-IM-PRO-C001-000002

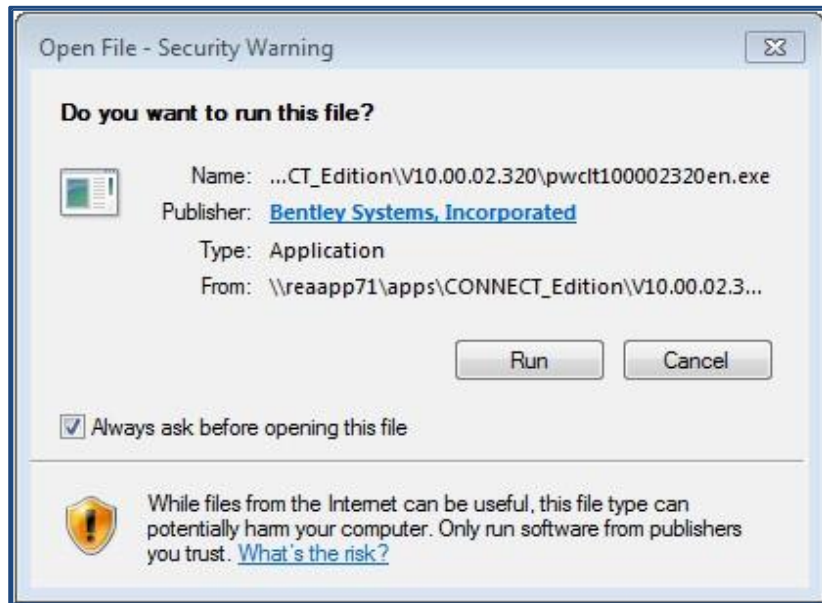
Contents

1	Installation	1
2	Configuration	4
3	Accessing the system	7
3.1	Via the Projectwise Explorer Client	7
3.2	Via the Web Portal	7
4	Password update after first login	8
4.1	Projectwise Client	8
4.2	Web Portal	8

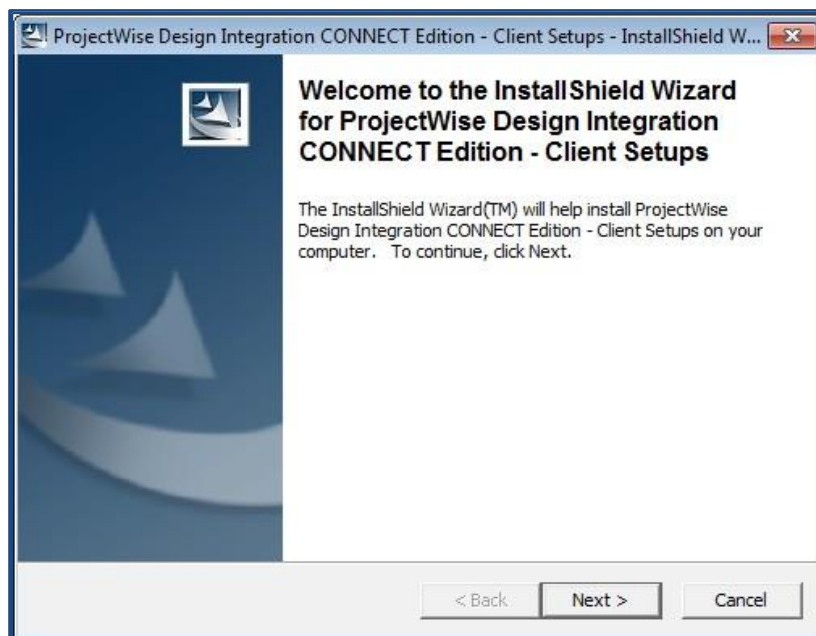
1 Installation

1.1.1 Double click on the [pwclt100002265en.exe](#) file

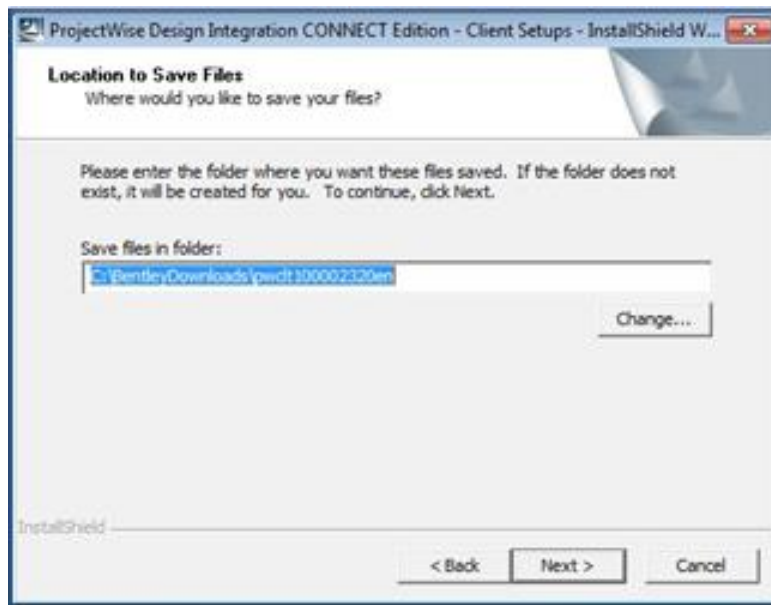
1.1.2 The following form will appear: Click [Run](#)



1.1.3 On the next form click [Next](#)

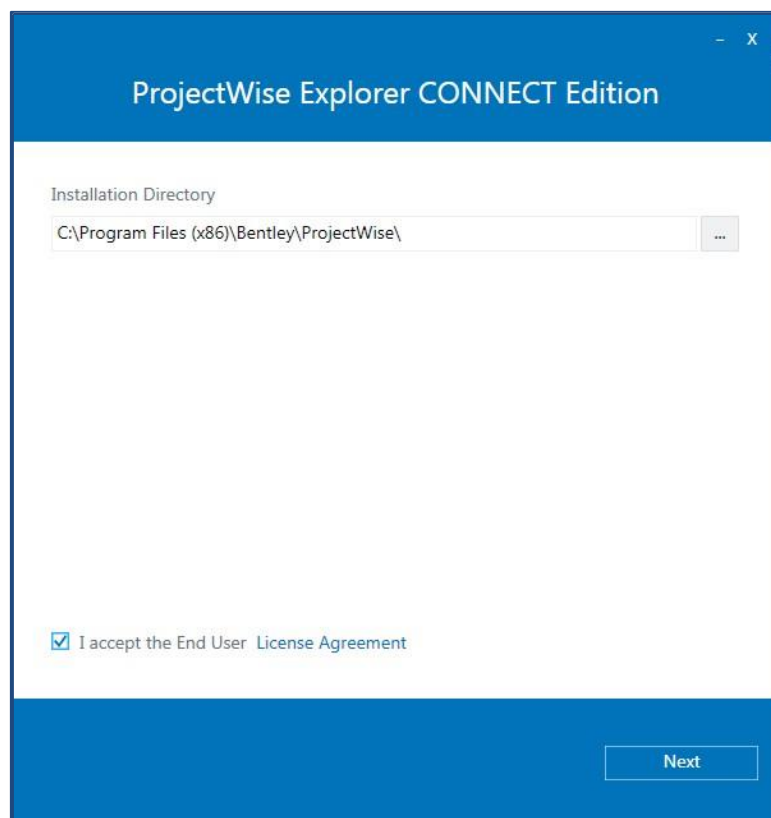


1.1.4 On the next form click **Next**

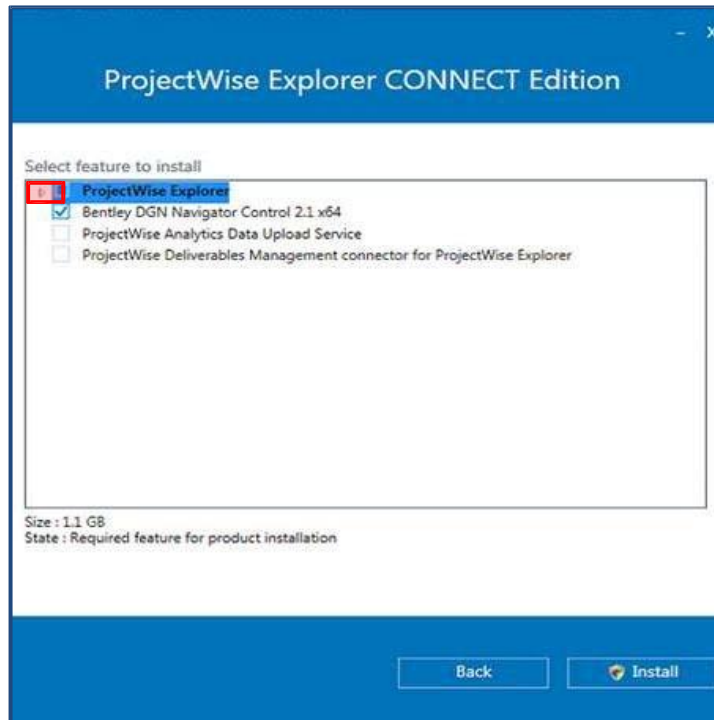


1.1.5 Once the download has completed you may need to wait a short while for the installation to start

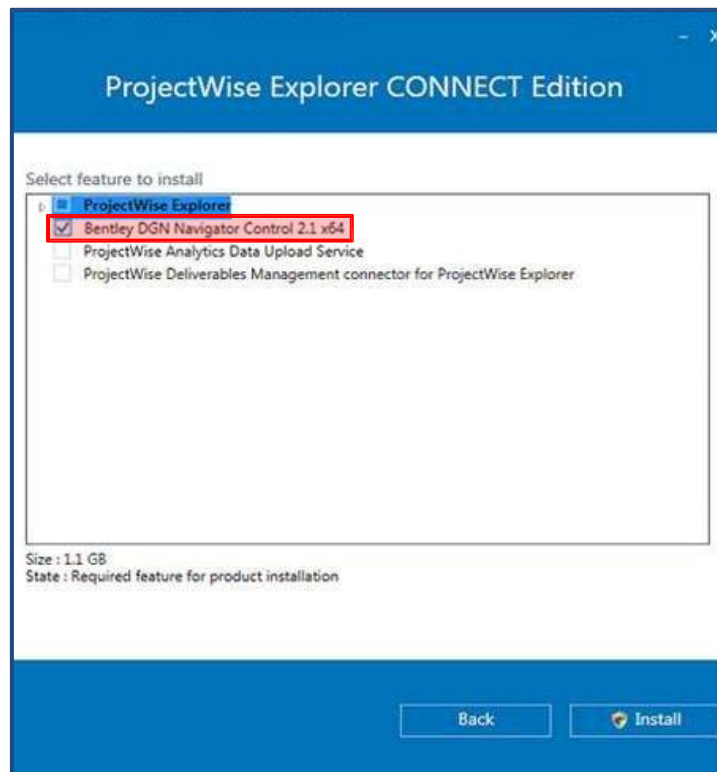
1.1.6 On the next form click on '**I accept the End User Licence Agreement**' and click **Next**



- 1.1.7 On the next form click on the arrow beside **ProjectWise Explorer** and select which software you need to integrate with ProjectWise (for authorised software list refer to the ALIGN BIM Execution Plan [1MCO5-ALJ-IM-PLN-C001-000001]).



- 1.1.1.8 Select the **Bentley DGN Navigator Control** if it's not selected by default



- 1.1.1.9 Click on **Install** followed by **Finish** once the install is complete.

- 1.1.1.10 Once installed the ProjectWise software is located under:

Click on the **Windows** button and click on **All Programs > Bentley > ProjectWise > ProjectWise Explorer**

2 Configuration

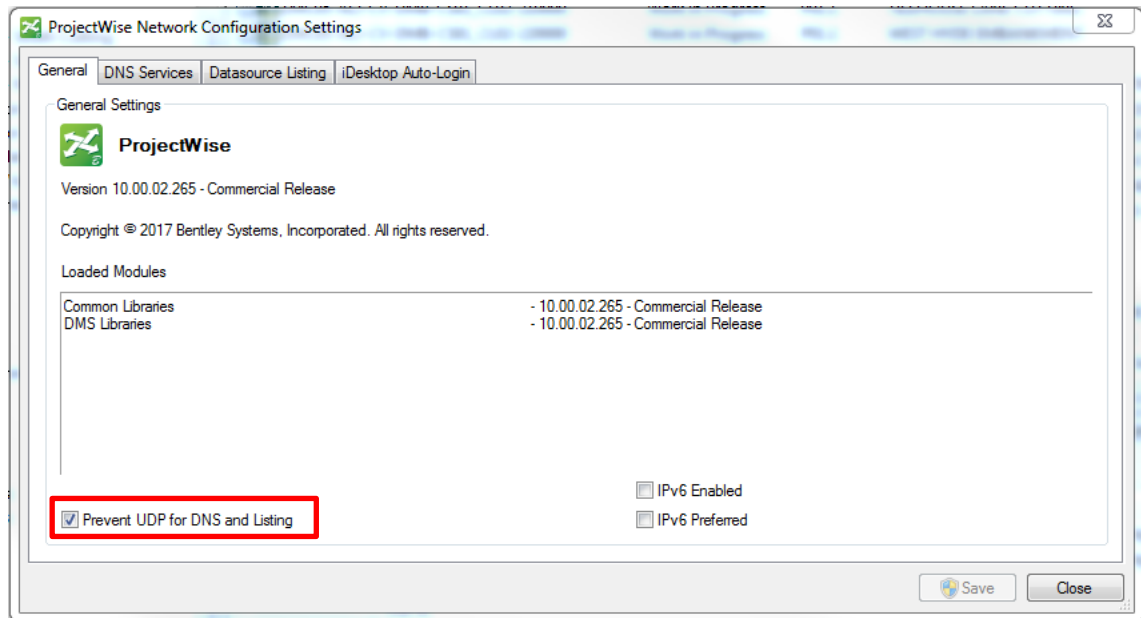
To access the ALIGN JV ProjectWise datasource **PORT 5800** must be opened on your network Firewall. Please coordinate with your IT/Network administrator to get this port opened for ProjectWise communication with the ALIGN server **alj-pw.bentley.com**

- 2.1.1.1 ***Note:** This step might need to have Administrator rights on your computer depending on your parent company's IT policy. If this is the case please refer them to this document.*

2.1.1.2 Open ProjectWise.

2.1.1.3 Go to the **Tools** menu and open the **Network Configuration Settings ...**

2.1.1.4 In the **ProjectWise Network Configuration settings > General** tab please ensure your settings are as per the screenshot below:

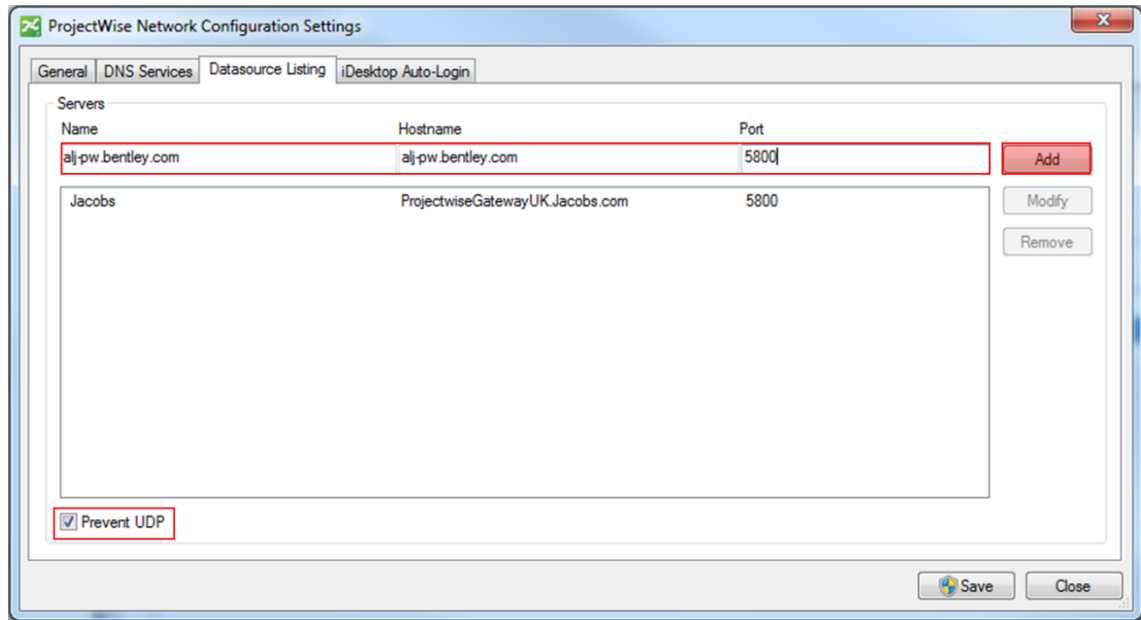


Under the **DNS Services** and **Datasource Listing** tabs add the following information and check the box **Prevent UDP**:

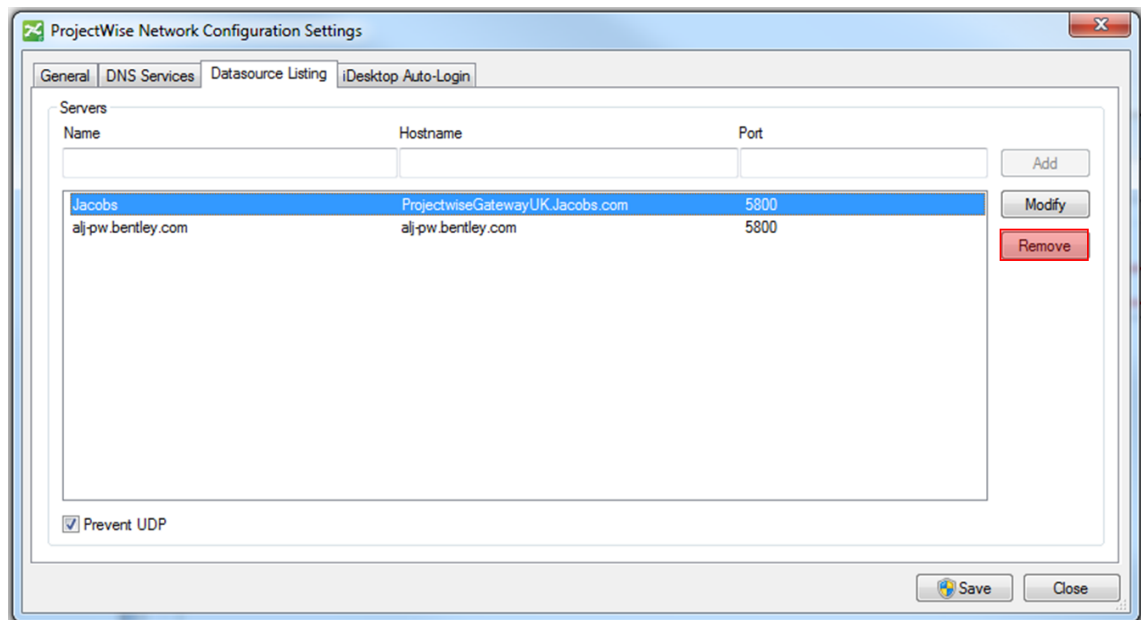
- Name: **alj-pw.bentley.com**
- Hostname: **alj-pw.bentley.com**
- Port: **5800**

Click on **Add**

Make sure that **Prevent UDP** is also ticked on both the DNS and Datasource tabs.



- 2.1.5 *If you are already using the Jacobs datasource you can remove it from the list by selecting it and click on **Remove**. Apply the same procedure for both tabs as per step 2.1.4.*



- 2.1.6 Once configured and if the Port 5800 is open you will be able to see the ALIGN Datasource: **alj-pw-01**.

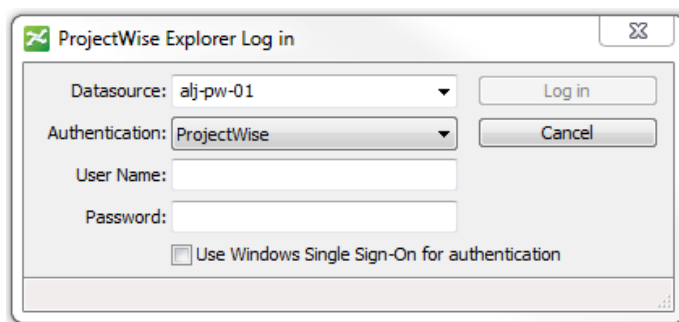
- 2.1.7 The first time you log in you will be asked to create a **Working Directory**. Please click on **Yes**.

3 Accessing the system

3.1 Via the Projectwise Explorer Client

3.1.1 To log in to the Bentley ProjectWise Explorer client please use the following instructions:

1. Open the ProjectWise Explorer Client software from the windows menu
2. From the Datasource menu select **Login**
3. In the ProjectWise Explorer log in dialog window ensure you have the **alj-pw-01** Datasource selected and enter the credentials sent to you via the email "Welcome to ALIGN ProjectWise"



3.2 Via the Web Portal

3.2.1 To log in to ALIGN ProjectWise Web portal please use the following instructions:

1. Open the address above in a browser such as Internet Explorer.
2. In ProjectWise web server log in window ensure you have selected **alj-pw-01** from the location menu and enter the credentials sent to you via the email "Welcome to ALIGN ProjectWise"

A screenshot of the 'ProjectWise Web Server' login form. The form has a header with the ProjectWise logo and the text 'ProjectWise Web Server'. Below the header, there is a 'Location' dropdown menu with 'alj-pw-01' selected. Underneath are text input fields for 'User Name' and 'Password'. At the bottom right, there is a green 'Log in' button.

4 Password update after first login

4.1 Projectwise Client

4.1.1 Please ensure that you change your password when you first log in to the system. If you are logging into the Windows client please use the following instructions:

1. Login to the software using the credentials above
2. From the **Tools** menu select **Options**
3. In the **General tab** enter your old password, your new password and then verify it
4. Select Apply and then **OK**

4.2 Web Portal

4.2.1 If you are logging into the web portal please use the following instructions:

1. Login to the software using the credentials sent to you via the email "Welcome to ALIGN ProjectWise"
2. From the **Tools** menu select **Change Password**
3. In the change password dialog box enter the current password and your new password twice
4. Select **OK**